

# **A Loose Tooth**

**File Name:** Aliu\_SMO\_Test

**Designer:** Angela Liu

## **Story**

T-Rex Tooth Island has been overtaken by Goombas. They raided the villages and even got into Queen Toothfairy's castle. The Chain Chomp Boss saw this as the perfect opportunity to overthrow Queen Toothfairy and take over the island for himself. He captured Princess Peach and kept her trapped at the highest point of the castle. It is Mario's mission to rescue Princess Peach and restore order on T-Rex Tooth Island.

## **Location/Environment**

This level takes place on T-Rex Tooth Island, a neighboring island of the Fossil Falls in the Cascade Kingdom. The island has a large castle and small villages; the kingdom is run by Queen Toothfairy. A waterfall divides the two main villages, West Village and East Village. The island is known as the collection ground of T-Rex Rex's fallen teeth.

## **Enemies**

- **Goomba:** Goombas are low health enemy targets that patrol areas around them. If Mario gets too close, they will chase him.
- **NEW! Falling Chain Chomps:** The Chain Chomp Boss has built a small machine that creates mini Chain Chomps and launches them at Mario. Throughout the level, mini Chain Chomp will be launched in Mario's direction and explode when coming in contact with any objects including Mario himself. This will create AOE damage to everything around it.
- **Chain Chomp Boss:** Chain Chomp Boss is a giant loose Chain Chomp that acts as a bowling ball when attacking Mario. The only way to defeat the Chain Chomp Boss is to capture him with Mario's Cap-ture ability and roll himself off the edge of the castle.
- **NEW! Goomba General:** General of the Goombas. Mario must Cap-ture the Goomba General and enter the final scene as the Goomba General and then secretly Cap-ture Chain Chomp Boss to defeat him.

## **Game Mechanics**

- Mario can move around with his signature Run and Jump abilities.
- **Cap Throw** This ability allows Mario to have a ranged attack.
- **Cap-ture:** Mario can use the Cap Throw ability to Cap-ture different enemies and control them.
- **NEW! Trampoline:** Mario Throws Cappy onto the ground and Cappy becomes an inflated cushion that Mario can use to jump to high elevations and/or launch Mario in certain directions.

## **Collectible**

- **NEW! Tiny Teeth:** Throughout the level, Mario can collect tiny teeth that can be given to Queen Toothfairy in exchange for gold coins.

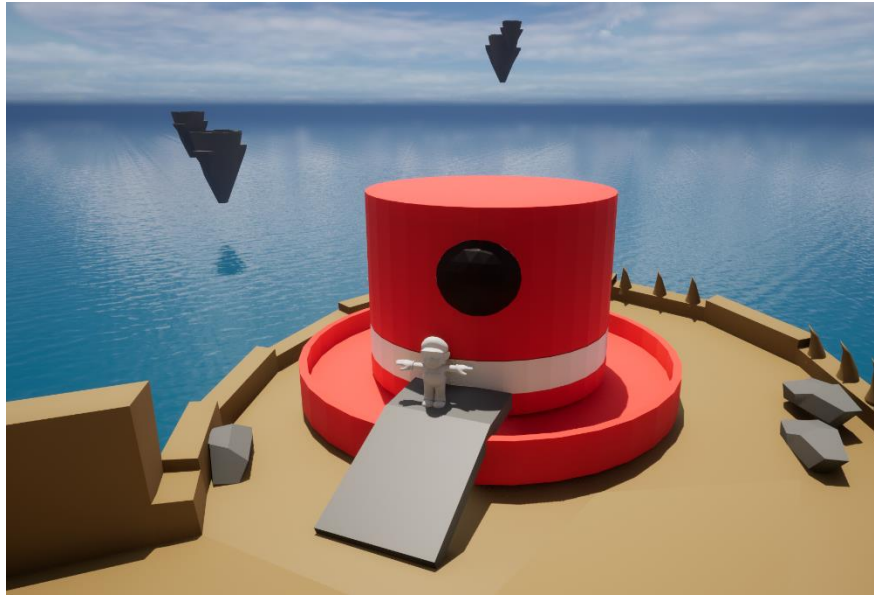
## **Non-Playable Characters (NPC's)**

- **NEW! Queen Toothfairy:** Queen Toothfairy was the ruler of T-Rex Tooth Island before it was overthrown by Goombas and the Chain Chomp Boss.
- **NEW! Fairy Slaves:** These are the workers of Queen Toothfairy and live in the villages that have been taken over. Their purpose on the island is to bring in new teeth from T-Rex and make sure to clean and polish them for the Queen.

## Mission Walkthrough

### 1. Level Start

- IGC - Mario Flies in with the Odyssey and lands on T-Rex Tooth Island.



### 2. West Village:

- When Mario arrives at the West Village, he sees that the entire village is infested with Goombas patrolling around. Mario has to kill all the Goombas and cross the bridge to the East Village.



### 3. East Village:

- The East Village is also crawling with Goombas. The poor Fairy Slave asks Mario to help exterminate all the Goombas from the West and East Village and he will call his people to help build a bridge for Mario to cross the river to the castle.



### 4. Crossing the Bridge:

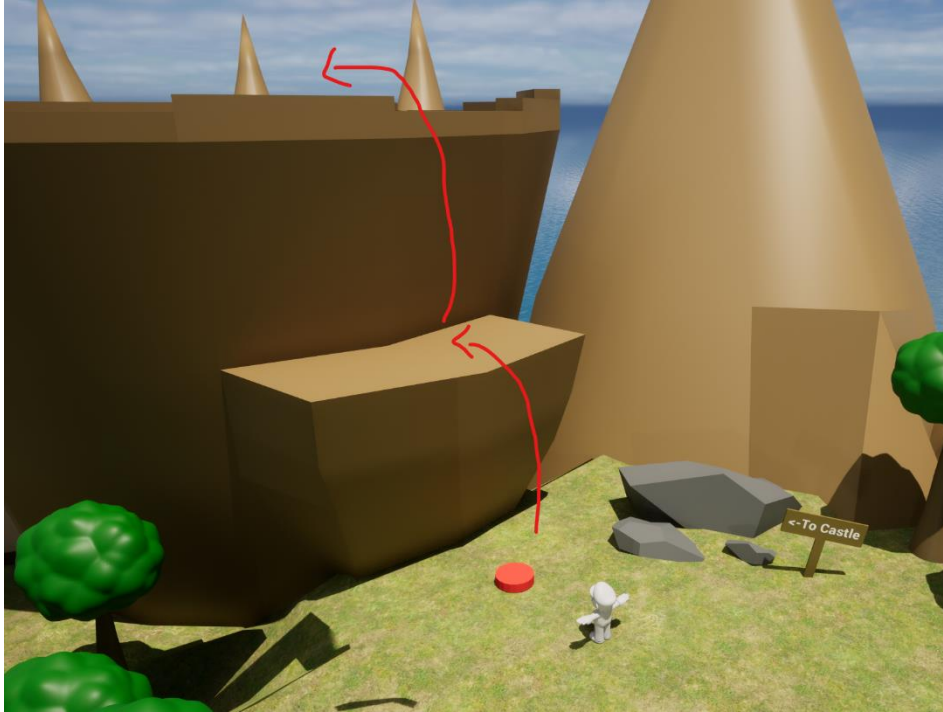
- Mario successfully defeats all the Goombas from both villages and the Fairy Slave calls his people to build the bridge. Mario crosses the bridge.





5. Trampoline Jump:

- Mario needs to use Cappy's Trampoline Mechanic to jump higher and reach higher platforms.



- Mario can also use Cappy's Trampoline Mechanic to launch himself in certain directions for longer distances.

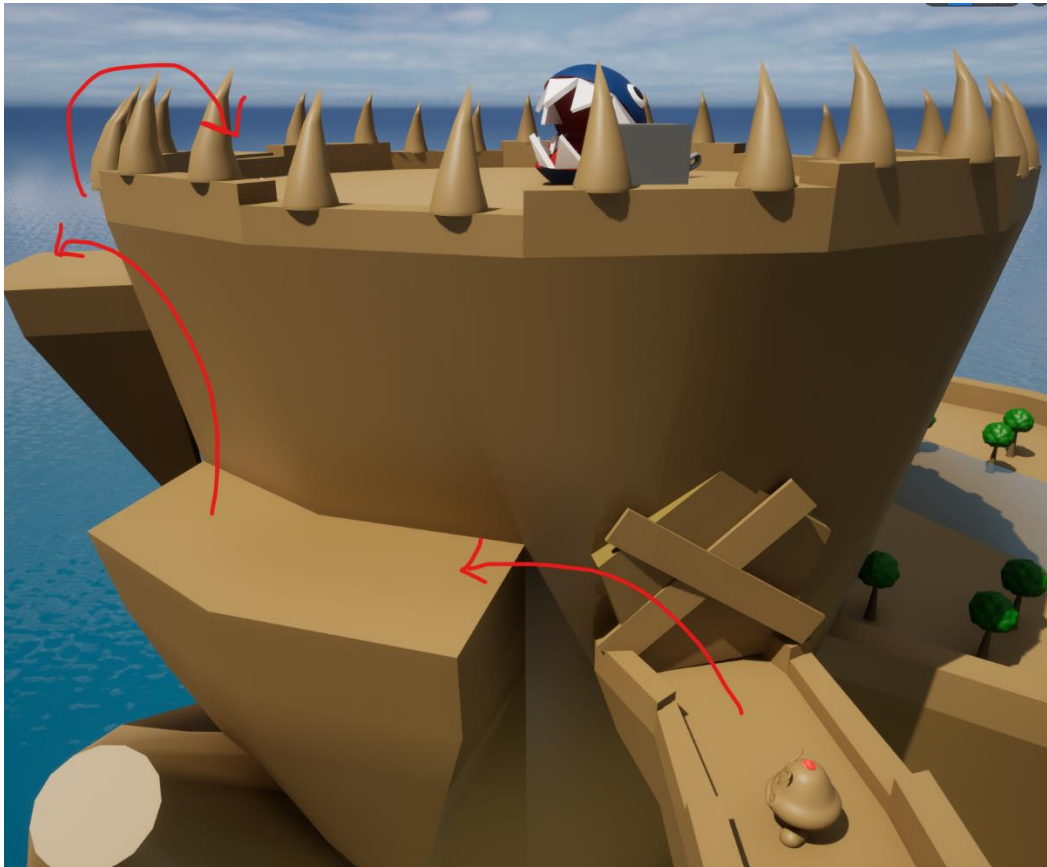


- Continue to use Cappy's Trampoline Mechanic to get to the top of the structure. Be aware of Falling Chain Chomp that will knock Mario out of position and apply severe damage.



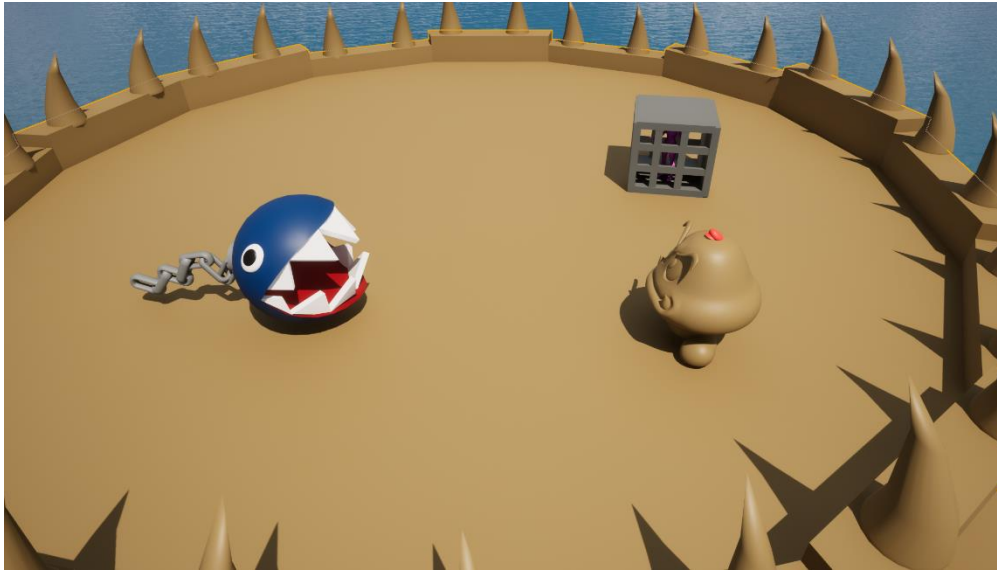
#### 6. General Goomba

- General Goomba is standing in the way of the entrance to the castle. Mario will defeat the mini-boss General Goomba by using his Cap Throw Ability. When General Goomba has fainted used Cap-ture to control him.
- When the Cap-tured General Goomba sees that the entrance to the castle is completely blocked off, they discover an alternative path to take the top of castle.



7. Chain Chomp Final Boss Fight:

- Phase 1: Approach Chain Chomp Boss as Cap-tured General Goomba. Chain Chomp Boss is quick and strong. He will destroy Mario in a couple of chops. Thus, as Cap-tured General Goomba is required to complete the first phase. Engage in combat with a series of brawls.
  - i. General Goomba's abilities include kicking and headbutting the Chop Chain Boss.
- Phase 2: Chain Chomp defeats Cap-tured General Goomba but he is now weakened. Now, Chain Chomp's only ability is to roll towards Mario like a bowling ball.
  - i. Mario must position himself in front of the sharp tooth structures. Rolling into these sharp tooth structures will damage Chain Chomp Boss severely and he eventually faints earning Mario victory.



8. End Game:

- IGC – Chain Chomp faints at the end of the battle and Mario rushes to rescue Princess Peach from the cage. Mario then uses Cap-ture on the fainted Chain Chomp Boss and makes him roll himself off of the edge of the castle and into the endless sea. Peace is finally restored at T-Rex Tooth Island and the Queen Toothfairy, along with her Fairy Slaves, lived happily ever after.